



la Orana

IA ORANA (YO-RAH-NAH) = HELLO

WELCOME ABOARD

SATURDAY
JANUARY 23, 2016
M/S PAUL GAUGUIN

SOCIETY ISLANDS, FRENCH POLYNESIA
ALL ABOARD 10:00PM



Dear Guests,

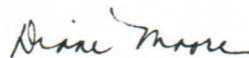
Welcome aboard the m/s *Paul Gauguin*! We are proud that since 1998, *The Gauguin* has been honored with numerous awards and accolades. Combine that with our 25 years as a luxury resort hotel provider in the Tahitian islands, and you are assured a vacation experience of the highest caliber.

On this seamless voyage, you'll explore secluded lagoons and intriguing ports of call that larger ships can't reach, as we ply the impossibly blue waters of the South Pacific. Throughout your cruise, you'll find a wide selection of activities and amenities to allow you to do as much — or as little — as you wish, from shore excursions and our onboard watersports marina activities to guest lecturers, gourmet dining, and authentic Polynesian entertainment.

Each day, *la Orana* — your daily program — will acquaint you with the choices that await you. We hope it helps you make the most of your time aboard *The Gauguin*. On behalf of the Captain, Hotel Director, officers, staff, and crew, I would like to assure you that our goal is to provide you with a relaxing and rewarding vacation beyond anything you ever thought possible.

Thank you for choosing to sail with *Paul Gauguin Cruises*. We look forward to helping you discover new places and create memories that will last a lifetime. Please don't hesitate to let us know if there's anything we can do to ensure that you have the finest cruise possible.

Bon Voyage,



Diane Moore
President, Paul Gauguin Cruises

Paul Gauguin
CRUISES

WELCOME ABOARD

3:30 - 4:30	TI NO AVATEA (Afternoon Tea) is served in La Veranda with the music of Marius .	La Veranda (6)
3:30 - 4:30	ALTERNATIVE DINING RESERVATIONS LA VERANDA - featuring French cuisine is open for dinner, offering you the dishes of Chef Jean-Pierre Vigato, from the world-renowned, two-star Michelin-rated "Aspicius" in Paris. LE GRILL - a more casual dining experience with a hint of Asia is open for dinner. For reservations for either La Veranda or Le Grill, please contact Maître d'Hôtel in La Veranda, Deck 6 or Dial 942.	La Veranda (6)
3:00 - 7:30	SPA - The Deep Nature Spa is open for information & assistance on the services offered.	Spa (6)
3:30 - 5:30	LA BOUTIQUE - Our boutique onboard is open every day for your convenience.	La Boutique (6)
6:00 - 8:00		
3:00 - 7:00	DIVERS DESK - The Dive Desk is open to book your Dives, DSD and Refresher Class. Please be aware that the classes are tomorrow and there is limited space available.	Lobby (4)
3:00 - 7:00	TOUR BOOKING - The Travel Concierge Desk is open for bookings and inquiries. Please note: many tours are limited in number of participants.	Lobby (4)

5:30 **LIFEBOAT DRILL - Please listen carefully to announcements. This drill is MANDATORY FOR ALL GUESTS. Shipboard services will be suspended at this time.**

EVENING

6:00	PORT TALK - Discover the islands of Huahine & Taha'a, the tours we offer and what to do there with the Travel Concierge Manager Sorin. Ask all your questions even if you are not going on a Tour.	Grand Salon (5)
6:00 - 7:30	MELODIES - Enjoy a pre-dinner cocktail with the melodies of our pianist Marius .	Piano Bar (5)
6:30 - 7:30	THE SOUNDS OF MAGIS VOX BAND - Come enjoy a cocktail with the songs of Magis Vox Band .	La Palette (8)
6:30 - 9:00	L'ETOILE RESTAURANT - Opens for "A la Carte" Dinner. Maitre d'hôtel Luis Alvarez and Executive Chef Paul Ellis welcome you to our dining experience. (<i>open seating</i>)	L'Étoile (5)
7:00	SHIP'S FAMILIARIZATION TOUR - Join your Tahitian Host for a tour around the ship and discover the lounges, restaurants and ship's services onboard.	Reception (4)
8:30 - 9:15	PIANO BAR - Make some new friends with the melodies of Marius .	Piano Bar (5)
9:15	COCKTAILS - Enjoy a cocktail and the best tunes played by Magis Vox Band .	Pool Deck (8)
9:30	WELCOME ABOARD PARTY AND M/S PAUL GAUGUIN ORIENTATION Your Cruise Director Frédéric Jansen will introduce his Assistant Alison , our Tahitian Ambassadors Les Gauguines & Gauguins , Entertainers & Concessionaires as we welcome you to Paul Gauguin.	Pool Deck (8)
10:15 - 11:00	LATE NIGHT MELODIES - Sit down, relax and enjoy a night cap with our pianist Marius .	Piano Bar (5)
11:00	LA PALETTE DISCO	La Palette (8)

SENIOR OFFICERS & STAFF

Captain: Toni Mirkovic
 Staff Captain: Albin Fiser
 Chief Engineer: Goran Cimera
 Hotel Director: Jacques Le Tallec
 Cruise Director: Frédéric Jansen
 Ship's Doctor: Igor Gromadskyi
 Guest Relations: Christelle Raoul
 Financial Officer: Krisha Sordan
 Assistant Cruise Director: Alison Lucas Lopez

IMPORTANT SAFETY NOTICE

Compulsory Abandon Ship Drill

Saturday, January 23rd | 5:30pm

In accordance with International Maritime Law, SOLAS – Safety Of Life At Sea, a **Compulsory Abandon Ship Drill** for all Guests and Crew will take place today, **Saturday, January 23rd, 2016 at 5:30pm**.

Important information about your escape routes and assigned Muster station is posted behind your stateroom door. Please take time to study this information carefully.

TONIGHT

WELCOME ABOARD PARTY

9:30pm | Pool Deck (8)

Your Cruise Director **Frédéric Jansen** will introduce his Assistant **Alison**, our Tahitian Ambassadors **Les Gauguines & Gauguins**, Entertainers & Concessionaires as we welcome you to Paul Gauguin.

ANNOUNCEMENTS

Onboard Travel Concierge Team

Your Onboard Travel Concierge Team will help you explore our ports-of-call. Our team has years of travel experience, and we have gathered the best ground operators and local experts to help us provide you with current and local information. Whether your goal is to experience a coach tour, a small-group adventure, or to simply do your own thing ashore - come visit your Travel Concierge Team. We look forward to helping you enjoy each port in your own way.

Snorkeling Equipment

Please pick up your complimentary snorkel equipment from the Marina at your earliest convenience. The access is from Deck 4 lobby. The marina is open daily - please refer to the opening hours on the back page!

Smoking Policy

Smoking is only allowed in open deck areas (Deck 5 Starboard side & Deck 9 Starboard side) & La Palette (Deck 8, outside starboard side). E-Cigarettes are also forbidden inside the ship. Please consult your cabin directory for more information.

Mail Services

You may leave your mail at Reception for posting. Please clearly mark your stateroom number on each piece of mail. Local postage rates will automatically be charged to your onboard account.

Dress Code

Country Club Casual, or elegant resort wear, is appropriate dress for all evenings aboard The Gauguin. Country Club Casual consists of a dress, or skirt or slacks with a blouse or sweater for ladies, and slacks and collared shirts for gentleman. No ties are required at any time, although gentlemen may opt to wear a jacket to the Captain's Welcome Reception. Please note that casual wear such as shorts, t-shirts, casual jeans (frayed and/or with holes), baseball caps, flip-flops, and Crocs are not considered appropriate after 6:00 p.m. In all restaurants and lounges. Bathrobes and bathing suits are not appropriate in the ship's restaurants and lounges, and shirts and shoes are required in all public areas at all times.

Biomedical waste

If you need to dispose any biomedical waste during the cruise, please ask your stewardess or at our reception, so special arrangements can be made with the medical department regarding disposal.

Swimming Pool

Please note that due to maintenance reasons the swimming pool will be closed tonight while in the port of Papeete. Be advised that it is strictly prohibited to jump into the pool due to safety reason. The pool will reopen tomorrow morning for your pleasure. Thank you for your understanding!

Nationality Breakdown For Passengers This Cruise:

277 Passengers, 14 Nationalities.

Australia	4	Germany	4	Sweden	1
Canada	20	Japan	4	Switzerland	3
China	5	Korea, Republic of	1	United Kingdom	4
Colombia	1	Portugal	2	United States	217
France	8	Spain	3		

Peace of mind and unparalleled luxury

Your destination duty-free shopping experience onboard *The Paul Gauguin.*

La Boutique

DECK 6

LOCATION
DECK 5

Internet Café

Pay as you go or purchase an Internet Plan for the length of your cruise.

Here's a list of tips to make sure you're not consuming more megabytes than you intend:

- Put your device in airplane mode and turn on Wi-Fi
- Turn off Wi-Fi when you aren't accessing the Internet
 - Turn off any automatic software updates
 - Turn off Photostream (iOS Devices)
 - Turn off background app refresh
- Disable the auto back-up function and syncing to cloud-based services
- Remember that activities such as streaming movies consume a lot of data, while others, such as checking email and web browsing consume less.
- Unused Minutes can not be refunded.

Traveler's Tension

Relaxing massage

for only \$80!

Come and visit the
Deep Nature Spa on Deck 6

DEEP NATURE
SPA . M/S PAUL GAUGUIN

BAGS
PAREO
SHIRTS
SHOES
DRESSES
SUN SCREEN
SWIMSUITS
SUN GLASSES
POSTCARDS
SOUVENIRS
GIFTS

TODAY'S SERVICE HOURS

RECEPTION DESK

Deck 4, Mid-Ship – Dial 0

Open 24-hours a day

Please be advised that we can not accept additional credit card changes 48 hours prior to the end of the cruise.

GUEST RELATIONS MANAGER

Deck 4 Mid-Ship – Dial 0

TRAVEL CONCIERGE

Deck 4, Mid-Ship – Dial 901

3:00pm - 7:00pm

Local information: As destinations specialists, we intend to share our experience and our knowledge about our ports of call. Sorin, Travel Concierge Manager, Ruta and Vairagi are happy to assist you.

Please note: A \$15 communication fee will be charged to your onboard account for all request involving any outside communication.

HOSPITAL

Deck 3, Forward – Dial 3525

5:00pm - 6:00pm

Dial "0" for emergency appointments. There is a charge for medical consultation and will be billed to your shipboard account. Extra charges will be added for any consultation outside of the scheduled hours. Please note that there is no pharmacy onboard, the medications are available with consultation only. Motion sickness tablets are complimentary and available at Reception.

DVD LIBRARY

From Reception
Deck 4, Mid-Ship

Open 24-hours a day

LIBRARY

Deck 6, Mid-Ship

Open 24-hours a day

A Selection of books for your reading pleasure

LA BOUTIQUE DUTY FREE

Deck 6, Mid-Ship – Dial 930

3:30pm - 5:30pm

6:00pm - 8:00pm

INTERNET CAFE

Deck 5 Aft

Wireless Internet service is available with your laptop/device. Or you may use the computers in the Internet Café, mid-ship Deck 5. Pay as you go or purchase a time plan for the entire cruise. Please note that satellite internet service is significantly slower and may depend on reception in various areas. Pricing and login information are located in the Internet Café, where the Systems Manager is available for assistance, daily, 9:00am - 10:00am and 5:00pm - 6:00pm.

FITNESS CENTER

Deck 6

5am - Midnight

We kindly ask all Power Walkers to use Decks 8 & 9 after 8:30am. It is not permitted to jog on either Decks 8 & 9.

Please note: Children under the age of 16 are not permitted in the gym without parental supervision.

DEEP NATURE SPA

Deck 6, Mid-Ship – Dial 933

3:00pm - 7:30pm

LE CASINO

Deck 5, Mid-Ship

Closed

Must be 21+ to enter

PHOTO SHOP & GALLERY

Deck 5 Aft

Closed

MARINA PLATFORM

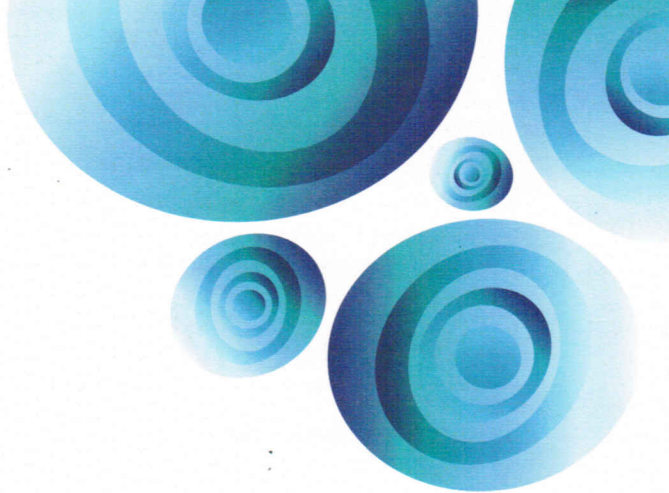
Deck 4 Aft – Dial 3556

Snorkeling equipment pick-up:
5:45pm - 7:00pm

DIVE DESK

Deck 4 Mid Ship – Dial 917

3:00pm - 7:00pm



DINING

TI NO AVATEA (Afternoon Tea)

La Veranda

3:30pm - 4:30pm

DINNER

L'Etoile

6:30pm - 9:00pm

La Veranda (reservations only)

6:30pm - 8:30pm

Reservations for dinner in La Veranda and Le Grill can be made during breakfast and lunch.

BARS & LOUNGES

Pool Bar

3:00pm - 6:30pm

9:00pm - 11:00pm

La Palette

3:00pm - 2:00am

Piano Bar

6:00pm - Close

Grand Salon

Closed

COCKTAIL OF THE DAY

Paradise Cocktail

Dark Rum, Crème de Banana, Blackberry Brandy, Orange Juice, Grenadine, Sweet & Sour Mix.

Fruit Punch (non alcoholic)

Pineapple Juice, orange Juice, Sweet & Sour Mix, Grenadine.

Captain ANTE-TONI MIRKOVIC

Captain Toni was born in Split, Croatia and has been living in Dubrovnik since the age of eight. After graduating from the Nautical School and Maritime University in Dubrovnik, he joined his first cruise vessel in 1980, as a Third Officer on the Jadrolinija cruise vessel m/v "Dalmacija", as she sailed the Mediterranean, North and Baltic Seas, the entire Norwegian Coast, Island and Svalbard Archipelago in the Arctic Ocean, north of mainland Europe. Within five years, he was promoted to Chief Officer in the same company.

In 1986, Captain Toni sailed on the cruise ship "Ambassador" under Atlas and Salen Lindblad Management as a Chief Officer and Staff Captain. This gave him the opportunity to visit the West and East coast of Africa on their expeditions including the Seychelles and Madagascar.

Toni became a Captain for the first time in 1995, on passenger-cargo ships, cruising from Northern Europe to the United States. He also sailed on the famous sailing ship "Sea Cloud", on her Mediterranean and Black Sea cruises.

From 1998 to 2005, he served as Master of Cruise / Casino ships in South East Asia and Australia, under Sembawang Johnson Management and NCCL vessels, and on the Paul Gauguin since April 2006. He is very excited to be sailing in the beautiful waters of French Polynesia, where he has been charmed by its people and natural beauty. He is also very proud to be in command of the m/s Paul Gauguin



STAFF CAPTAIN ALBIN FISER



Albin Fiser is born in Dubrovnik Croatia 1976, in the beautiful city on south of Croatia, where he is living. He took degree at famous Nautical Academy in Dubrovnik at 1995, he continued with education and obtained B.Sc. diploma on Maritime University in Dubrovnik at 2000. His career as deck cadet started on small cruise ship MV Adriana sailing itineraries from Mediterranean to Spitsbergen in Norway to obtain the license for deck officer. As a young deck officer he started on Ibero Cruceros sailing itineraries in Mediterranean and Brazil. Constantly improving his knowledge and experience he continue his career as deck officer sailing on the biggest cruise companies as Oceania Cruises, RCI and Princess Cruises all around the world from Alaska to Hawaii, Australia to New Zealand, South America to Antarctic stepping ahead in ranks from 3rd to 1st Officer. In 2015 he joined to Paul Gauguin as Staff Captain, coming in beautiful French Polynesia to discover this famous part of the world in new adventures.

CHIEF ENGINEER GORAN CIMERA



Goran was born in Zadar and grew up in Split, Croatia. He has always had a love for the sea just like his father and his grandfather. He attended Maritime School in 1975 for four years and then continued his education at the Marine Engineering University where he graduated in 1980. He began his ship life working on cargo ships from 1980 to 1992 and then moved to cruise vessels, taking the position of Staff Engineer and Chief Engineer later on. Goran joined the Regent family in April 2005 where, as Chief Engineer, he oversaw the Engine Department including all technical operations. Currently, Goran really enjoys cruising around the beautiful islands of French Polynesia aboard the m/s Paul Gauguin and when he is home on vacation he loves to spend his time sailing, which is one of his favorite hobbies.

HOTEL DIRECTOR JACQUES LE TALLEC



Jacques Le Tallec comes from a family where hospitality spans over 4 generations. He was born in Brittany, and still lives there, in a small village where Gauguin spent time before moving to Tahiti and where he created together with other artists the Famous "Ecole de Pont-Aven". After a few years working in a 5 star Resort in St. Barth, Jacques went back to Brighton University and obtained a degree in International Hospitality Management. He started his career at sea in 1983 with Pearl Cruises, then joined Orient Lines in 1987 as Hotel Manager. Jacques has been sailing all over the world, from The North Pole all the way to The South Pole. When not onboard the m/s Paul Gauguin, he spends his time between Brittany and Peru.

CRUISE DIRECTOR FRÉDÉRIC JANSEN



Frédéric was born in a German speaking town in Belgium from French mother and Flemish father. After completing his studies in England, Belgium and Spain, he started to work as a real estate agent then started his career on ships being promptly promoted cruise director in 1999. Having worked for several companies such as Royal Olympic Cruises, Festival Cruises, Silversea, Star Clippers, Pullmantur, Croisières de France, Ponant, ... he had the opportunity to sail around the world visiting remote areas such as Papua New Guinea, Russian Kamchatka, Greenland, Antarctica, Pitcairn Island,... Frédéric fell in love with French Polynesia in 2007 during his first cruise in the Pacific waters on board a sailing ship. He is also specialized as a travel companion for extreme trips on land. Multi-talented Frédéric speaks 6 languages fluently and currently lives in Mojácar, a lovely village in Andalucía, Spain. He is very happy to recently have joined the Paul Gauguin family.
