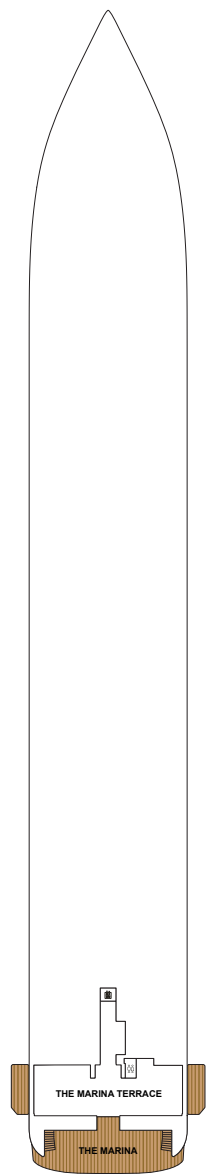
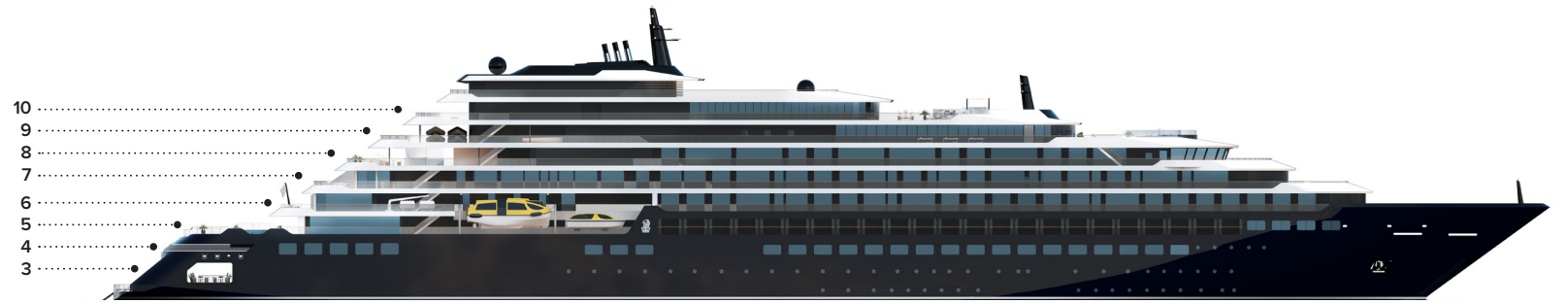
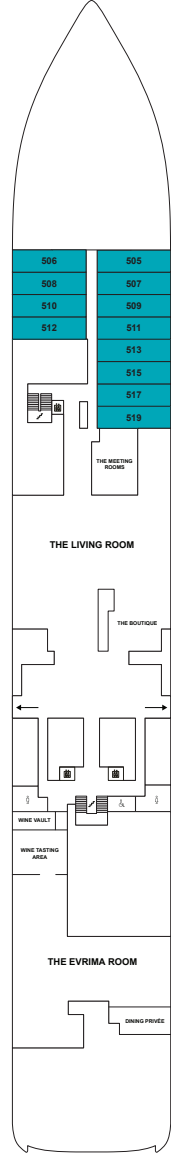




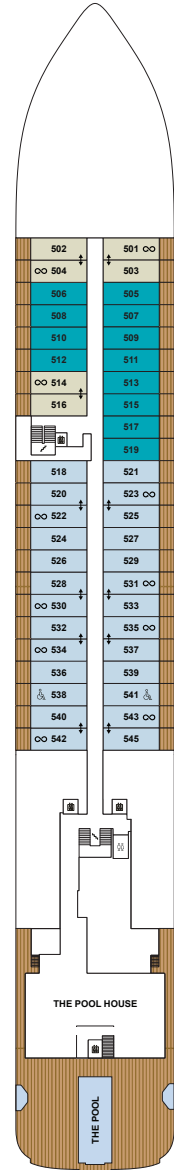
# THE RITZ-CARLTON YACHT COLLECTION



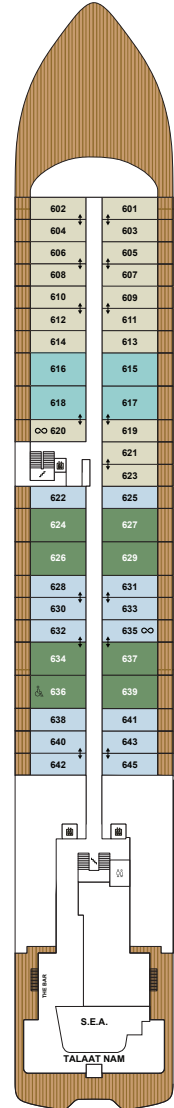
**DECK 3**  
THE MARINA TERRACE  
THE MARINA



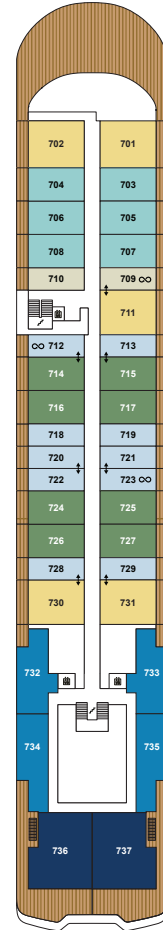
**DECK 4**  
THE MEETING ROOMS  
THE LIVING ROOM  
THE BOUTIQUE  
THE EVRIMA ROOM  
DINING PRIVÉE  
WINE VAULT  
WINE TASTING AREA  
505 – 519 LOWER LEVEL



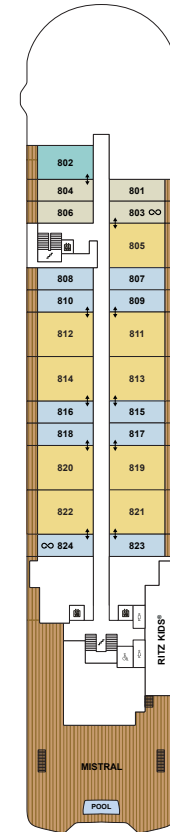
**DECK 5**  
THE POOL HOUSE  
THE POOL  
SUITES 501 – 545



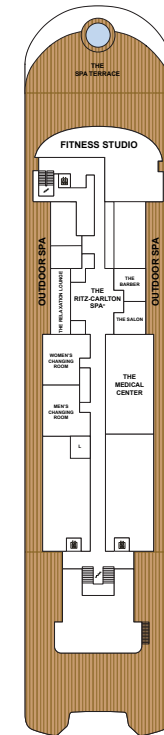
**DECK 6**  
THE BAR  
S.E.A.  
TALAAT NAM  
SUITES 601 – 645



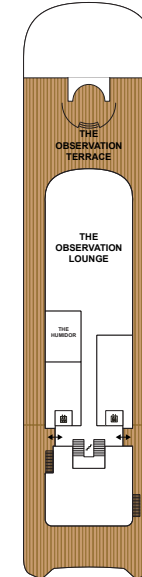
**DECK 7**  
SUITES 701 – 737



**DECK 8**  
MISTRAL  
RITZ KIDS®  
SUITES 801 – 824



**DECK 9**  
FITNESS STUDIO  
THE RITZ-CARLTON SPA®  
THE SPA TERRACE  
THE BARBER /  
THE SALON  
LAUNDERETTE  
THE MEDICAL CENTER



**DECK 10**  
THE OBSERVATION  
LOUNGE  
THE OBSERVATION  
TERRACE  
THE HUMIDOR

## SUITE CATEGORY

- THE OWNER'S SUITES \_\_\_\_\_
- THE VIEW SUITES \_\_\_\_\_
- THE LOFT SUITES \_\_\_\_\_
- THE GRAND SUITES \_\_\_\_\_
- THE SIGNATURE MID SUITES \_\_\_\_\_
- THE SIGNATURE SUITES \_\_\_\_\_
- THE TERRACE MID SUITES \_\_\_\_\_
- THE TERRACE SUITES \_\_\_\_\_
- ACCESSIBLE SUITES \_\_\_\_\_
- CONNECTING SUITES \_\_\_\_\_
- CONVERTIBLE SUITES\* \_\_\_\_\_

## YACHT SPECIFICATIONS

- GUEST CAPACITY \_\_\_\_\_ 298
- OFFICER AND CREW \_\_\_\_\_ 246
- TOTAL SUITES \_\_\_\_\_ 149
- TONNAGE \_\_\_\_\_ 25,400
- LENGTH \_\_\_\_\_ 624 FEET / 190 METERS
- WIDTH \_\_\_\_\_ 78 FEET / 23.8 METERS
- GUEST DECKS \_\_\_\_\_ 8
- BUILT \_\_\_\_\_ 2021
- YACHT'S REGISTRY \_\_\_\_\_ MALTA

\*Select Terrace Suites have the ability to convert into an expanded living and dining area or remain a second bedroom when connected to the adjacent suite.

# SUITE AMENITIES AND FEATURES

Wake up every morning relaxed and carefree, from one of our 149 expertly appointed suites. Designed to combine the modern elegance of The Ritz-Carlton® with the casual luxury of the world's most magnificent super yachts, our suites set a new standard for luxury travel.

- Private, spacious terrace overlooking the ocean
- Custom luxury bed and bath linens
- Refrigerator provisioned to your preferences
- 24-hour in-suite dining
- Luxurious custom king bed sleep system
- Espresso machine with complimentary coffee and teas
- Complimentary bottle of champagne upon arrival
- Individual robe and slippers
- Double vanity bathrooms
- Access to a Personal Concierge for all suites

## THE OWNER'S SUITES

**SUITE** 1091 SQ FT / 101 SQ M  
**TERRACE** 635 SQ FT / 59 SQ M  
**NUMBER OF SUITES** 2

- Large private terrace with private whirlpool
- Luxurious and modern living and dining area
- Convertible sleep sofa
- Luxury custom king bed sleep system
- Double vanity bathroom with modern soaking tub and separate shower
- Second bathroom with modern shower system
- Walk-in wardrobe
- Digital flat screen television
- In-suite safe
- Vanity mirror and hair dryer
- Hypoallergenic pillows, upon request
- 230v and 120v outlets, as well as USB charging capabilities



## THE VIEW SUITES

**SUITE** UP TO 574 SQ FT / 53 SQ M  
**TERRACE** 108 – 129 SQ FT / 10 – 12 SQ M  
**NUMBER OF SUITES** 4

- Dramatic floor to ceiling glass throughout
- Private terrace
- Luxurious and modern living and dining area
- Convertible sleep sofa
- Luxury custom king bed sleep system
- Double vanity bathroom with modern soaking tub and separate shower
- Digital flat screen television
- In-suite safe
- Vanity mirror and hair dryer
- Hypoallergenic pillows, upon request
- 230v and 120v outlets, as well as USB charging capabilities



## THE LOFT SUITES

**SUITE SIZE** 611 SQ FT / 57 SQ M  
**TERRACE SIZE** 81 SQ FT / 7.5 SQ M  
**NUMBER OF SUITES** 12

- Innovative two story suite with entry from both levels
- **Upper Level**
  - Private terrace
  - Luxurious and modern living and dining area
  - Convertible sleep sofa
  - Powder room
- **Lower Level**
  - Picture window
  - Luxury custom king bed sleep system
  - Double vanity master bathroom with modern soaking tub and separate shower
- Digital flat screen television
- In-suite safe
- Vanity mirror and hair dryer
- Hypoallergenic pillows, upon request
- 230v and 120v outlets, as well as USB charging capabilities



UPPER LEVEL



LOWER LEVEL

## THE GRAND SUITES

**SUITE** 587 SQ FT / 55 SQ M  
**TERRACE** 108 – 118 SQ FT / 10 – 11 SQ M  
**NUMBER OF SUITES** 14

- Private terrace
- Luxurious and modern living and dining area
- Convertible sleep sofa
- Luxury custom king bed sleep system
- Double vanity bathroom with modern soaking tub and separate shower
- Dual walk-in wardrobes
- Digital flat screen television
- In-suite safe
- Vanity mirror and hair dryer
- Hypoallergenic pillows, upon request
- 230v and 120v outlets, as well as USB charging capabilities



## THE SIGNATURE SUITES

**SUITE** 429 SQ FT / 40 SQ M  
**TERRACE** 81 – 118 SQ FT / 7.5 – 11 SQ M  
**NUMBER OF SUITES** 27

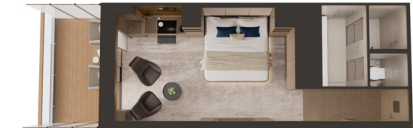
- Private terrace
- Luxurious and modern living and dining area
- Convertible sleep sofa
- Luxury custom king bed sleep system
- Double vanity bathroom with modern soaking tub and separate shower
- Digital flat screen television
- In-suite safe
- Vanity mirror and hair dryer
- Hypoallergenic pillows, upon request
- 230v and 120v outlets, as well as USB charging capabilities



## THE TERRACE SUITES

**SUITE SIZE** 300 SQ FT / 29 SQ M  
**TERRACE SIZE** 54 – 81 SQ FT / 5 – 7.5 SQ M  
**NUMBER OF SUITES** 90

- Private terrace
- Luxury custom king bed sleep system
- Double vanity bathroom with modern shower system
- Digital flat screen television
- In-suite safe
- Vanity mirror and hair dryer
- Hypoallergenic pillows, upon request
- 230v and 120v outlets, as well as USB charging capabilities
- Select Terrace Suites have the ability to convert into an expanded living and dining area or remain a second bedroom when connected to the adjacent suite.



EXPANDED LIVING AREA OPTION